

# Easy-Change Installation Instructions For Double Door Applications

Please read all instructions before beginning.

For proper installation of Wood Storm/Screen Doors, we recommend using the "DELUXE HARDWARE KIT" offered by The Combination Door Company. The kit includes everything you need for quick, correct installation of your new door including lockset, hinges, heavy-duty door closure, and safety chain.

1. Trim top of doors to match the top of your entryway with a fine tooth circular saw.
2. Determine full door opening width.
3. Trim doors and apply astragal (supplied by others) to the passive door. When fitting is completed a 1/8" gap should be around the top of the doors, down the sides and between the active and passive doors. The door bottoms should have a 3/16" gap. Once the doors are fitted, place shims around, between, and under doors to allow the 1/8" margins and 3/16" on the bottom.

**Note: Most storm doors are outswing. Use care to install astragal properly.**

4. Once the doors are fitted, place the shims around, between, and under the doors to allow the 1/8" margins and the 3/16" on the bottom.

## Doors are now ready for hinge installation:

(Hinges may be surface mounted, mortised, or half-mortised.)

**SURFACE MOUNTED:** The hinges will be mounted flat with the screws entering from the outside of door and jamb. Place one hinge 6" from the top of the door and one hinge 6" from the bottom of the door. Make sure to maintain the 1/8" margins where specified and 3/16" at the door bottom. Mark holes and drill 1/8" pilot holes, being careful not to drill through the door. Apply the top and bottom hinges on both doors. Center the third hinge between the top and bottom hinges.

**MORTISED:** The hinges are mounted on the edge of each door and exterior door frame. Start by marking the top and bottom hinge locations 6" from each end on both the doors and frame. Center the third hinge. Remove the doors and set on edge. Place the hinge at each location on the edge of the door and trace. With a wood chisel, tap around the area marked, making sure not to go deeper than the thickness of the hinge. Next, chisel out the area where the hinge will be, making sure not to go deeper than the hinge thickness. The hinge should fit snugly. Repeat for remaining hinges. Drill 1/8" pilot holes and apply one hinge leaf to each mortise. Repeat procedure for the door frame. Set door in place and replace pins.

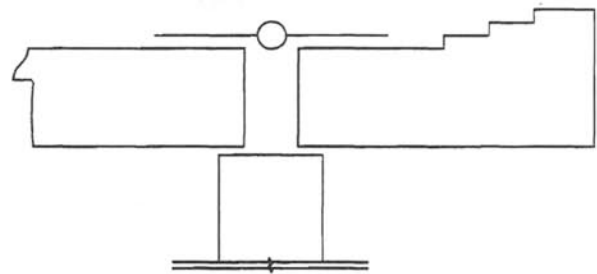
**HALF-MORTISED:** Use procedures from surface mounted and mortised. Pull hinge pin and reverse one leaf. Surface mount can be on either the door or the exterior trim.

5. Remove the doors from hinges and finish per instructions on reverse side of this page.
6. Install the locksets according to the manufacturer's instructions. Location should be approximately 36" from the door bottom. CAUTION: Make sure the locksets don't interfere with the operation of the entrance door locksets. Dummy knob set is installed on the passive door.

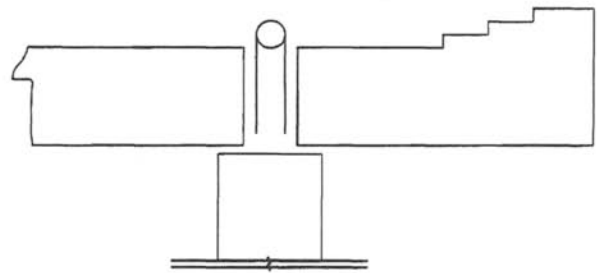
7. For Ultra-Vu and styles #11 and #50, install the door closer on the bottom portion of the active door. Locate it as high on the bottom rail as possible. For all other door styles, center the closer on the lock rail below the inserts. Manufacturer's installation instructions are included.
8. Install the chain guard protector near the top of the active door according to manufacturer's instructions.
9. Install the surface bolts on the top and bottom of the inside stile on the passive door. The strike plate can be mortised by using a wood chisel. Drill 3/32" pilot holes.

## TOOLS REQUIRED:

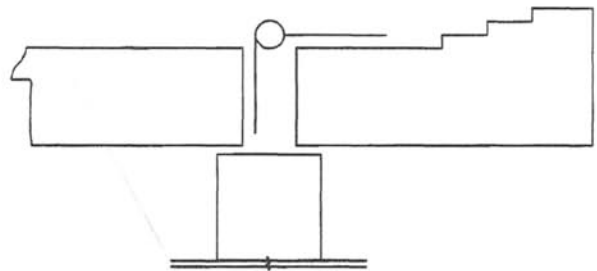
Phillips Screwdriver, Slotted Screwdriver, Wood Chisel, Drill and Bits, Hammer, Fine Tooth Circular Saw, and Plane.



Surface Mounted Hinge



Mortised Hinge



Half Mortised Hinge

## The Combination Door Company

1000 Morris Street \* P. O. Box 1076  
Fond du Lac, WI 54936-1076  
[www.combinationdoor.com](http://www.combinationdoor.com)